



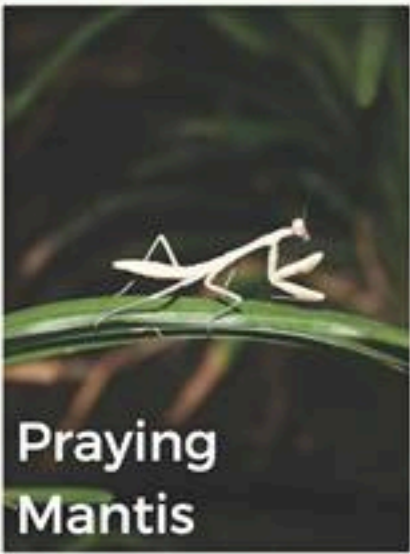
Lady bug

- Average life span in the wild is 2-3 years
- Most ladybugs voraciously consume plant-eating insects, such as aphids
- Can eat over 50 aphids a day



Honey Bee

- Agriculture depends greatly on the honeybee for pollination
- Honeybees account for 80% of all insect pollination
- Only insect that produces food eaten by man



Praying Mantis

- Can live up to a year in the wild
- Diet consists of moths, crickets, grasshoppers, flies, and other insects
- Females typically kill and eat their mate



Wasp

- Habitat is worldwide, except Polar Regions
- Help in the pollination of plants
- Wasps are natural predators of caterpillars and thus, a friend to farmers

- Do not have to mate to reproduce
- Give birth to live young
- Suck the liquid phloem tissue of plants
- Damages plants by depriving tissues of vital plant nutrients



Aphid

- Scale insects attack almost any part of a plant and feed by sucking out the juices.
- Many species are serious agricultural pests



Scale Insect

- Can move very quickly when disturbed, making control difficult
- Feed on the stems and undersides of leaves
- Their saliva is toxic



Grape Leafhopper

- Larvae feed for 3 weeks resulting in skeletonization of the foliage
- May weaken a tree, making it more susceptible to attack by other insects and diseases



Elm Leaf Beetle